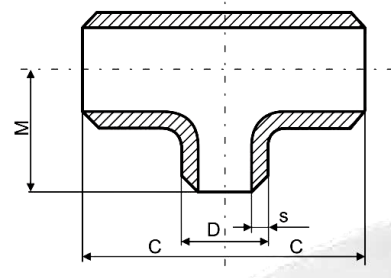


Trójniki równoprzelotowe

Wymiary i waga

ASME B16.9



DN	Std XS XXS	Sch	D		s		C=M		waga teoretyczna kg/szt.
			mm	cale	mm	cale	mm	cale	
1/2"	Std		21,3	,840"	2,8	,109"	25,4	1"	0,159
	XS				3,7	,147"	25,4	1"	0,204
3/4"	Std		26,7	1,050"	2,9	,113"	28,4	1.1/8"	0,204
	XS				3,9	,154"	28,4	1.1/8"	0,272
1"	Std		33,4	1,315"	3,4	,133"	38,1	1.1/2"	0,286
	XS				4,5	,179"	38,1	1.1/2"	0,354
	XXS				9,1	,358"	38,1	1.1/2"	0,59
1.1/4"	Std		42,2	1,660"	3,6	,140"	47,8	1.7/8"	0,526
	XS				4,8	,191"	47,8	1.7/8"	0,653
1.1/2"	Std		48,3	1,900"	3,7	,145"	57,2	2.1/4"	0,771
	XS				5,1	,200"	57,2	2.1/4"	0,962
	XXS				10,2	,400"	57,2	2.1/4"	1,45
2"	Std		60,3	2,375"	3,9	,154"	63,5	2.1/2"	1,89
	XS				5,5	,218"	63,5	2.1/2"	1,87
		160			8,7	,344"	63,5	2.1/2"	2,30
	XXS				11,1	,438"	63,5	2.1/2"	2,27
2.1/2"	Std		73	2,875"	5,2	,203"	76,2	3"	2,68
	XS				7	,276"	76,2	3"	3,08
3"	Std		88,9	3,500"	5,5	,216"	85,9	3.3/8"	3,82
	XS				7,6	,300"	85,9	3.3/8"	4,50
		160			11,1	,438"	85,9	3.3/8"	5,9
	XXS				15,3	,600"	85,9	3.3/8"	7,60
4"	Std		114,3	4,500"	6	,237"	104,6	4.1/8"	5,99
	XS				8,6	,337"	104,6	4.1/8"	8,44
		120			11,1	,438"	104,6	4.1/8"	9,5
		160			13,5	,531"	104,6	4.1/8"	14,0
	XXS				17,1	,674"	104,6	4.1/8"	15,5
5"	Std		141,3	5,563"	6,6	,258"	124,0	4.3/8"	9,93
	XS				9,5	,375"	124,0	4.3/8"	12,9
6"	Std		168,3	6,625"	7,1	,280"	142,7	5.5/8"	16,5
	XS				11	,432"	142,7	5.5/8"	19,3
		120			14,3	,563"	142,7	5.5/8"	24,5
		160			18,3	,719"	142,7	5.5/8"	36,5
	XXS				21,9	,864"	142,7	5.5/8"	38,6