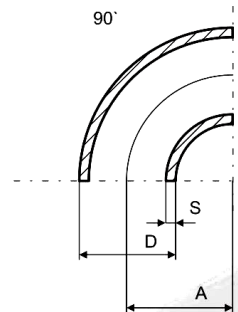


Kolana hamburskie

krótki promień (SR) 90°

Wymiary i waga

ASME B16.28, SR 90°



DN	Std XS XXS	Sch	D		s		A		waga teoretyczna kg/szt
			mm	cale	mm	cale	mm	cale	
1"	Std		33,4	1,315"	3,4	,133"	25,4	1"	0,104
	XS		33,4	1,315"	4,5	,177"	25,4	1"	0,104
1.1/4"	Std		42,2	1,660"	3,6	,140"	31,8	1.1/4"	0,172
	XS		42,2	1,660"	4,8	,189"	31,8	1.1/4"	0,230
1.1/2"	Std		48,3	1,900"	3,7	,145"	38,1	1.1/2"	0,249
	XS		48,3	1,900"	5,1	,200"	38,1	1.1/2"	0,390
2"	Std		60,3	2,375"	3,9	,154"	50,8	2"	0,500
	XS		60,3	2,375"	5,5	,218"	50,8	2"	0,600
2.1/2"	Std		73	2,875"	5,2	,203"	63,5	2.1/2"	0,900
	XS		73	2,875"	7,0	,276"	63,5	2.1/2"	1,10
3"	Std		88,9	3,500"	5,5	,216"	76,2	3"	1,40
	XS		88,9	3,500"	7,6	,300"	76,2	3"	1,80
4"	Std		114,3	4,500"	6,0	,237"	101,6	4"	2,70
	XS		114,3	4,500"	8,6	,337"	101,6	4"	3,60
5"	Std		141,3	5,563"	6,6	,258"	127	5"	4,50
	XS		141,3	5,563"	8,5	,375"	127	5"	6,21
6"	Std		168,3	6,625"	7,1	,280"	152,4	6"	6,80
	XS		168,3	6,625"	11,0	,432"	152,4	6"	10,3